



KONICA MINOLTA

bizhub 
C250P

B&W for everyday – with color when it counts.



bizhub C250P

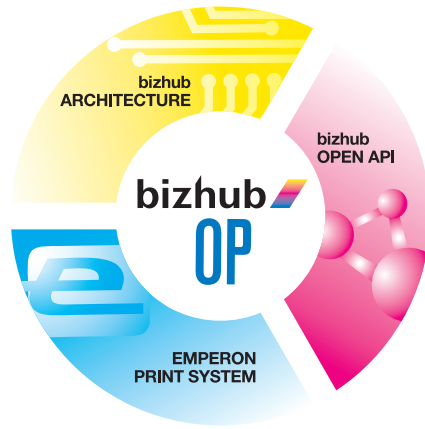
Full Color Printer. Think of all the power you need for high-volume in-house printing. Fast output. Superior imaging. Automatic finishing. And lower total cost of ownership. Now, add color – without sacrificing speed, reliability or cost-efficient operation. That's the bizhub™ C250P.



bizhub C250P proudly joins the bizhub family – named 2005 Product Line of the Year by Buyers Laboratory Inc.



The essentials of imaging



At last: color that really means business.

The bizhub C250P may be the smallest 11" x 17" color tandem printer in the industry. With a quiet, compact laser printing system for high-speed 25 ppm output, in both B&W and color. A robust duty cycle of 75,000 pages per month. And a wealth of advanced features and functions to increase production efficiency. Like the Emperon™ Print System, that does away with the need for an external or add-on print controller. A large-capacity B&W toner cartridge, for more economical high-volume monochrome printing. A new fusing section, with warm-up time of less than 2 minutes. A new 100-sheet bypass tray. And the ability to auto-duplex up to 140 lb. index paper.

A faster, smaller 11" x 17" color printer.

Every business needs color output capability – but not at slower speed and higher cost. That makes the bizhub C250P an ideal solution for mid-size offices, workgroups and departments that need color printing and finishing, in-house and on-demand, in both cost-effective B&W and fast, high-quality color.



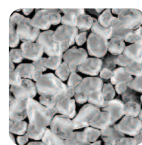
The power to print every job.

Compared to sending color work to a print shop, you'll save time and money. You'll maintain control of sensitive information. You can revise and reprint as often as necessary, without the expense of stocking and discarding old inventories – because you only print as many documents as you need. And the bizhub C250P can handle anything your print job demands. Load up to 140 lb. index in the multi-purpose cassette and bypass tray – with auto duplexing available for 140 lb. index. Print on coated stock and OHP transparencies. Even output 11" x 17" full-bleed originals on 12" x 18" paper, preserving borders and crop marks. And with options, you'll have 3,350-sheet total capacity – to handle long print/copy runs without reloading paper.

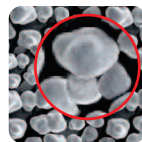
Maintenance was never this easy.
 Toner bottles are positioned for clean, simple replacement. The paper path is easy to access, so misfeeds can be cleared faster. And paper trays are front-loading at convenient height and reach.



Simitri
 Simitri® Color
 Polymerized Toner
 uses ultra-fine particles for sharper fine lines and more legible text in B&W documents. Your bizhub C250P also adds advanced color technologies for spectacular halftones, precision accuracy and more consistent quality.



Pulverized



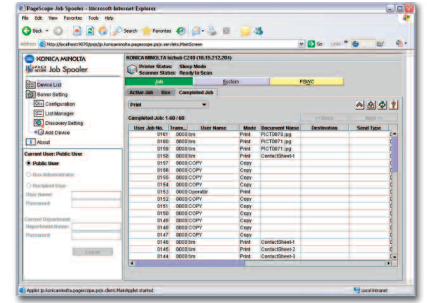
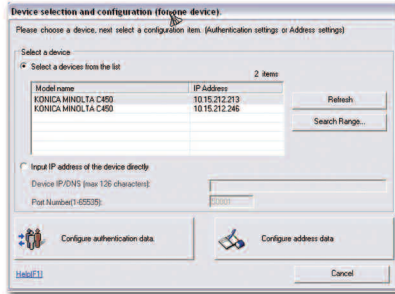
Simitri®

The options to customize your workflow.

Every workflow is different – and one-size-fits-all solutions rarely get the job done with maximum efficiency at minimum cost. So the bizhub C250P lets you customize a solution that's perfect for the specific needs of your application. You'll have a choice of two powerful automatic finishers – so you can customize the finishing capabilities your application demands, including sorting, multi-position stapling, 2/3-hole punching, even 60-page crease-fold saddle-stitch booklet-making. And with modular options, you can grow your system to keep pace with expanding output needs and rising document traffic.

PageScope controls it all from your desktop.

Whether you're an end-user or a system administrator, in charge of a single department or a large enterprise installation, PageScope gives you the tools you need to check device status, change settings, and set network configurations without leaving your desk. PageScope Job Spooler can also help you manage print queues and reprint jobs faster – changing job order, adjusting job settings, and executing multiple jobs simultaneously. PageScope Data Administrator™ gives you desktop control over one-touch addressing, device settings and security data.



Customizing your print system.

Job Separator Tray (JS-601)
lets you sort prints and copies separately. (optional)

Punch Kit (PK-501)
for 2/3-hole punching. (optional)

Booklet Finisher (FS-603)
lets you center-fold and saddle-stitch up to 60-page booklets. (optional)

Staple Finisher (FS-501)
lets you sort, group, and staple. (optional)

Parallel USB 2.0 Interface Kit (EK-702)
for local PC connectivity. (optional)

Enhanced Option Connection (MK-706)
for quick and easy installation of upgrades (optional)

Hard Disk Drive (HD-501)
40 GB capacity. (optional)

Automatic Duplex Unit (AD-503)
can save time and paper by automatically making 2-sided copies and prints. (optional)

100-Sheet Bypass
accepts up to 100 sheets, in sizes from 4" x 6" to 12" x 18" and weights from 16 lb. bond to 140 lb. index.

Multi-Purpose Cassette
holds up to 250 sheets, in sizes from 4" x 6" to 12" x 18" and weights from 16 lb. bond to 140 lb. index.

Standard Universal Cassette
holds up to 500 sheets, in sizes from 5-1/2" x 8-1/2" to 11" x 17" and weights from 16 lb. to 24 lb. bond.

Paper Feed Cabinet (PC-203)
has two 500-sheet universal drawers. (optional)

Paper Feed Cabinet (PC-103)
holds up to 500 sheets (universal drawer) with storage drawer. (optional)

Large Capacity Tray (PC-403)
handles 2,500 letter-size sheets. (optional)

Copy Desk (DK-502)
Copy Desk can be used for paper storage. (optional)



bizhub C250P



© 2005 KONICA MINOLTA BUSINESS SOLUTIONS U.S.A., INC. All rights reserved. Reproduction in whole or in part without written permission is prohibited. Konica Minolta and The essentials of imaging are trademarks of KONICA MINOLTA HOLDINGS, INC. bizhub, Emperon, PageScope, Workware, and Data Administrator are trademarks of KONICA MINOLTA BUSINESS TECHNOLOGIES, INC. Simitri is a registered trademark of KONICA MINOLTA BUSINESS SOLUTIONS. All other brands and product names are registered trademarks or trademarks of their respective owners.

For more information on PageScope, visit <http://kmb.s.konicaminolta.us> and click on Solutions, PageScope Software Suite.

Design & specifications are subject to change without notice.

* Some functions may require options, which may or may not be available at time of launch.

bizhub C250P



KONICA MINOLTA

KONICA MINOLTA BUSINESS SOLUTIONS U.S.A., INC.

100 Williams Drive
Ramsey, NJ 07446

www.kmbs.konicaminolta.us
www.kmbs.konicaminolta.us/solutions

TYPE:
Full-Color Printer

PRINT PROCESS:
Tandem Process

IMAGING SYSTEM:
Simitri® Color Polymerized Toner

MONTHLY DUTY CYCLE:
75,000 pages

PRINT SPEED:
Full Color and B&W: 25 ppm
(letter, portrait)

PRINT RESOLUTION:
600 x 600 dpi

MEMORY:
512 MB (standard/maximum)

HARD DISK DRIVE:
40 GB (optional)

GRADATION:
256 color shades per pixel

PAPER SIZE:
Multi-Purpose Cassette:
4" x 6" to 12" x 18"
Universal Cassette:
5-1/2" x 8-1/2" to 11" x 17"
Multiple Bypass:
4" x 6" to 12" x 18"

WARM-UP TIME:
Less than 110 seconds

FIRST PRINT:
Full color: less than 11.7 seconds
(letter)
B&W: less than 8.4 seconds (letter)

PRINT QUANTITY:
1 - 999

COLOR MODES:
Auto Color, Full Color, Black & White, 2-Color, Single Color

STANDARD PAPER SUPPLY:
250-sheet multi-purpose cassette
(16 lb. bond to 140 lb. index)
500-sheet cassette
(16 lb. bond to 24 lb. bond)
100-sheet bypass
(16 lb. bond to 140 lb. index)

MAXIMUM PAPER CAPACITY:
3,350 sheets (total, with options)

POWER REQUIREMENTS:
120 V, 60 Hz

POWER CONSUMPTION:
Less than 1.5 kW

DIMENSIONS (W x D x H):
25-3/4" x 28" x 23-3/4"
(standard configuration)

WEIGHT:
167 lbs. 8 oz.

OPTIONS:
AD-503 Duplex Unit
DK-502 Desk
EK-702 Parallel/USB 2.0 I/F Kit
FS-501 Staple Finisher
FS-603 Booklet Finisher
HD-501 Hard Disk Drive
JS-601 Option Tray
(for FS-501 Staple Finisher)
MK-706 Enhanced Option Connection
PC-103 Paper Feed Cabinet (500 sheets)
PC-203 Paper Feed Cabinet (500 sheets x 2)
PC-403 Large Capacity Tray (2500 sheets)
PK-501 Punch Kit (for FS-603)

Available Print Functions*

Account Track
(100 Accounts without HDD;
up to 1,000 Accounts with HDD)

APS
Auto Duplex
Auto Reset
Auto Tray Switching
Bi-Directional Communication
(Device Option Setting)
Color Modes & Functions
Auto Color/Full Color
Black & White Mode
Single Color Mode
2-Color Mode
Color Adjustments
(Brightness, Contrast,
Saturation, Sharpness,
Red, Green, Blue, Portrait,
Hue Density, Color Balance,
Copy Density)

Cover Mode
Criss-Cross Sorting
Distribution Number Printing
Energy Save Mode
Finishing (Group, Sort, Staple,
Punch, Booklet Center-Fold,
Center-Staple)

Form Overlay
Image Adjustments
(Color Matching,
Pure Black Auto On/Off,
Color Balance, Screen Setting,
Image Smoothing On/Off)

Image Preview
(Job Finishing Image Display,
Engine Configuration Display)

OHP Interleaving
Mixplex, Mix-Media
Paper Type Selection
(Normal, Thick 1, Thick 2,
Thick 3, OHP)

Proof Print
Secure Printing
Sleep Mode/Low Power
Watermarks

Emperon Print System

PROCESSOR:
466 MHz

RAM:
512 MB (standard)

HARD DISK DRIVE:
40 GB (optional)

PAGE DESCRIPTION LANGUAGE:
PCL 5e/5c Emulation
PCL6 (XL version 2.1) Emulation
PS3 Emulation

FONTS:
PCL Resident Fonts: 80 outline +
1 bitmap
PS3 Emulation Resident Fonts:
136 outline

PRINT DRIVERS:
PCL6: Windows 98SE, ME, 2000,
XP, 2003, NT 4.0 SP6
PS3: Windows 98SE/ME (PPD
files), 2000/XP/2003/NT 4.0
SP6 (Print Drivers), Mac OS
9.2 or later, Mac OS X 10.2,
and Mac OS X 10.3 (PPD files)
TWAIN Driver: Windows 98SE,
ME, 2000, XP, NT 4.0 SP6

INTERFACE:
Ethernet 10/100 BaseT
Parallel IEEE 1284 (optional)
USB 1.1, 2.0 (optional)

PROTOCOLS:
TCP/IP, IPX/SPX (NPS),
SMB, NetBEUI, LPD, LPR,
IPP 1.1, SNMP, HTTP,
AppleTalk (EtherTalk),
Pserver (Novell 4.x, 5, 6/NDS),
NPrinter, NDPS, SMTP, POP3,
LDAP, SSL

PAGESCOPE APPLICATIONS:
Network & Device Management
(bundled):
PageScope Data Administrator
for Printer Version
PageScope Direct Print*
PageScope EMS Plug-Ins
PageScope Job Spooler
PageScope NDPS Gateway
PageScope Net Care
PageScope Network Setup
PageScope Web Connection

OTHER UTILITIES:
HDD Backup Tool*
Plug-in for HP Web JetAdmin*